

# The Interface

John McMillan Presbyterian Church

*Our mission is to provide a way for the community to  
Know, Glorify, and Serve God!*



## March 2025

As I write these words for our newsletter, I am beginning my time with JMPC as your transitional pastor. Coincidentally, it is also the beginning of Lent. Lent is the holiest season of the church, and it brings us back to the reason we exist in the first place. We exist to worship and serve the God who loves us so much that he sent his only son to sacrifice himself for our salvation. Lent is the story of that love. Easter is the celebration of that love.

During Lent, I have chosen to do a sermon series called “Jesus is the Question.” You might be saying to yourself, “Wait a second, pastor, isn’t Jesus supposed to be the answer, not the question???” If you study how Jesus teaches in the gospels, however, you will find that he often does so by using questions. He uses what some would call the “Socratic method” of asking a series of questions to stimulate critical thinking and force a person to explore their beliefs, opinions and views. The important questions we will explore are:

### March Worship

**March 2** (10:00 am)

Rev. Emily Miller preaching  
Transfiguration Sunday  
Communion

**March 5** (7:00 pm)

Revs. Emily Miller and Judi  
Slater preaching  
Ash Wednesday

**March 9** (10:00 am )

Rev. Emily Miller

**March 16** (10:00 am )

Rev. Emily Miller

**March 23** (10:00 am) Rev. Miller

**March 30** (10:00 am) Rev. Miller

John 1:35-42 “What are you looking for?”

Mark 5:1-20 “What is your name?”

Luke 7:36-50 “Do you see this woman?”

Matthew 14:22-33 “You of little faith, why do you doubt?”

Matthew 6:25-34 “Who of you, by worrying, can add a single hour to your life?”

Mark 8:22-30 “Who do you say that I am?” – Palm Sunday

Matthew 27:38-51 “My God, my God, why have you forsaken me?” –  
Maundy Thursday

Luke 24:1-12, “Why do you look for the living among the dead?” - Easter

Jesus asked these questions of the disciples. He continues to ask them of us today.

Our transitional time together will be FULL of questions. As we answer the congregational assessment, as we meet together for some listening sessions, and as we explore who we have been as a church, who we are

Rev. Emily Miller, Pastor  
Carolyn Brow, Music Director  
Catherine Sams, Office Manager  
Elisabeth Jeffries, Organist  
Kim Doughty, Preschool Director  
Jackie Druga, AV/Tech

875 Clifton Road  
Bethel Park, PA 15102  
412-833-4704

Online: [www.johnmcmillanpc.org](http://www.johnmcmillanpc.org)  
Email: [jmpc@johnmcmillanpc.org](mailto:jmpc@johnmcmillanpc.org)

# Welcome New JMPC Officers

All officers elected at the February Congregational Meeting will take their offices in August 2025.

Deacons:

Three -Year Term: Susan Baux, Sandy Nowak, Mary Jo White

One - Year Term: Elizabeth Todd

Elders: All will serve a Three-Year Term: Suzie Burland, Caitlin Smith, Chris Todd

Congregational Members to Church Officer Nominating Committee: Charlie Previs Valene Scalise, Jessica Scott

now, and who we want to be in the future, we will continue to ask many, many questions. (continued on second page)

(cont. from front page) At some point, you will probably come to me and say, "Pastor Emily, enough with the questions! We need some answers, too!" Be sure that eventually, God will provide the answer we need.

I look forward to spending Lent with you and to seeking the answers to our many questions. My door is always open; stop by for a chat!

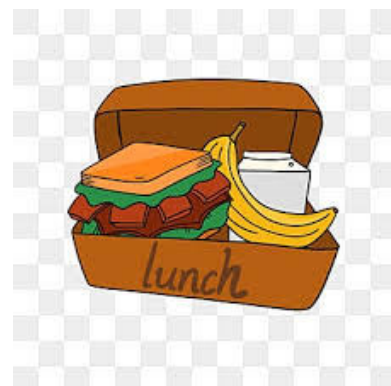
Pondering with you,

Pastor Emily



## HOLY COW! THANK YOU!

Thank you for participating in the Church Assessment Survey (CAT). **Mark your calendars for our Interpretation Lunch on April 6 after worship.** Rev. Ralph Lowe will walk us through our results while we enjoy our chili and hot dogs. The Mission Study will be available in April for everyone which will include a summary of the survey responses as well as demographic data, history, and a summary of who we are and what we do at JMPC.

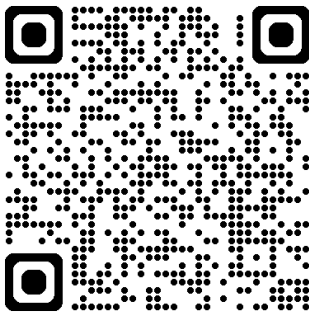


## Blessing Bag Workshop

In the book of Luke, a man asked Jesus, “Who is my Neighbor?” in attempt to discern who he was “required” to help in the eyes of the Law. Jesus answered him with the parable of the Good Samaritan, teaching the man that a true neighbor is “one who has mercy” upon others (Luke 10:25-37). So let us join together after church on **Sunday, March 16**, to assemble Blessings Bags for our neighbors in the Pittsburgh metro area who may need a moment of kindness.

To prepare for this event, please scan the QR code to go to the SignUpGenius for a list of supplies needed to make the bags. Common items, such as Ziploc bags, water bottles, snacks, tube socks, Chapstick, and hygiene products are needed, as well as monetary donations. Please sign up with what you can donate to help us make sure we have all types of items. There is a bin in the Narthex to collect items.

Speak to Lynn Willison, Cheryl Davies or Michelle Chenevert if you have questions. We look forward to seeing you on **March 16!**



## Greeters

We are looking for friendly faces to welcome all who come through our doors on Sunday mornings. Please scan your calendar and pick a Sunday that works best for you. There is a sign-up sheet in the Narthex or use the link for the sign-up genius. As the Greeters are the “first impression” of the John McMillan congregation, it is our hope that we make all visitors and members feel welcome with a warm handshake, a smile, and the message that we are glad they are here. Use the QR below to pick a date you are available. If you have any questions, contact Suzie Burland.



## Cookie Angels

Coffee Hour is Sundays before worship. There are some unseen angels at JMPC. They are the wonderful bakers who make cookies, muffins, and other delicious treats for us all to eat during Coffee Hour. Would you like to be an angel, too? Treats can be dropped off any time before **9:30 a.m.** on Sunday morning. If you drop them off during the week, please mark the treats with date to be used and put them in the freezer. There is a sign up in the Narthex! Questions: Suzie Burland or Kathleen Mazzola.



**Our cookie angels have been wonderful and your delicacies were enjoyed by all. But now we have the empty containers stacking up and waiting for you. They are sitting on the window ledge in the kitchen. Please pick them up at your earliest convenience. Thank you for your generous cookie donations.**

## Music Notes

The choir needs singers for

**Lent** and **Easter** for

which we are already

beginning to rehearse. Please just show up to

choir practice on **Thursdays at 7:00 p.m.** if

you are interested in joining us. Music reading

skills are not necessary and we welcome anyone

who enjoys singing.

***Come and join the fun!***



## Duquesne Kids Klub Needs YOU!

The winter session of Duquesne Kids Klub is running **March 3 and 10**. We use volunteers to help us with meals for around 25 at each meeting. If you would like to donate towards a meal or supply a meal for the Mondays in March, please contact Cheryl Davies 412.901.8939. Easy meals like chicken nuggets, pasta (some without sauce), sliders, etc. hits with the kids. Any child-friendly food welcome. Usually, we include some type of veggie or fruit and a dessert.

Would you like to be part of the fun? Volunteer to help on these Monday evenings from 5:30 to 7:00 pm.

## JMPC Deacons

**The Deacons at John McMillan are your fellow church members, your friends, neighbors and probably someone you sit near to in church each week. If you need a meal, a ride to a doctors, maybe a prescription picked up or maybe just someone to talk to, don't hesitate to give us a call we're always there to help..**

**Our names are listed in the back of The Sunday Bulletin each week and while one of us will be "The Deacon of The Month", any of us would love to hear from you....**

The March Deacon of the Month is Jeanie Bonnewell . She can be reached at (412) 216-8066

## Our Pastor Nominating Committee

The Pastor Nominating Committee will begin its work soon in our search for a new Head Pastor. This is typically an 18-to-24-month long process where this team will formulate a Ministry Discernment Profile (MDP) which is the tool used to JMPC with prospective pastors and their Personal Information Form(PIF). When they find a PIF that seems to fit what JMPC is searching for, they will then listen to sermons, conduct interviews, possibly do on-sight visits, and conduct reference checks before submitting a candidate for Presbytery approval. This is an involved process that takes prayer and discernment. Please keep our PNC in your prayers. Watch for updates on the bulletin board in the narthex and through the Interface and Bulletin. Thank you, PNC Members, for accepting this important position.

### PNC Members

Grace Bogden

Mary Cullison

Jim Ellis

Betsy Gilbert

Doug Mickey

Megan Sherry

Joe Smith

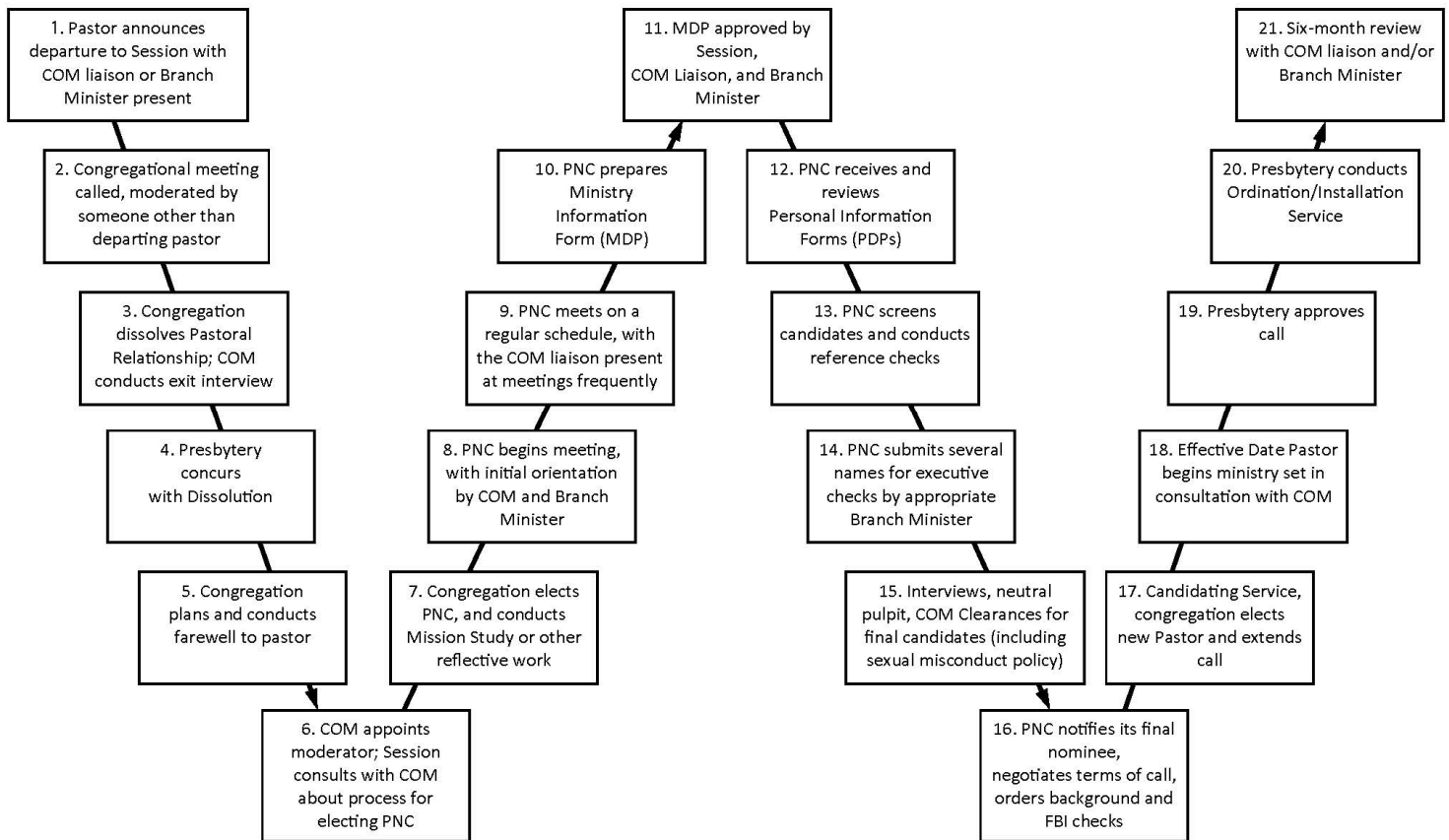
Laura Waterstram

Ella Willison



# Pittsburgh Presbytery

## Search Process for Pastors & Associate Pastors in Installed Positions



- Check each box as tasks are completed.
- This diagram might be used on a bulletin board to keep your congregation informed on the Search Process.
- Some steps may not be applicable in certain situations. Please consult your COM liaison.

## JMPC Book Club

**Monday, March 24**

**7:00 p.m. in the Parlor**

All are welcome to the discussion.

*James* by Percival Everett

A brilliant reimagining of *Adventures of Huckleberry Finn*—both harrowing and ferociously funny—told from the enslaved Jim's point of view, [...]this brilliant and tender novel radically illuminates Jim's agency, intelligence, and compassion as never before(Goodreads).

### **Future Books:**

April 28 - *The Wager: A Tale of Shipwreck, Mutiny and Murder* by David Grann.

*The Wager* is a grand tale of human behavior at the extremes told by one of our greatest nonfiction writers. Grann's recreation of the hidden world on a British warship[...]his portrayal of the castaways' desperate straits, and his account of the court martial [...] the incredible twists of the narrative, hold the reader spellbound(Goodreads).



## 2025 Flower Chart

The 2025 Flower Chart is on display in the Narthex.

Help to beautify our Sanctuary on Sundays throughout the year.

Flowers are \$45.00 and are promised to one family per Sunday on a first come -first served basis. Please

pay prior to, or the day

you request flowers to be displayed by placing your check in the offering plate with "flowers" noted, or give to the Church Office. Call Cindy Fast at 412-854-2356 if you have any questions.



## Winter Weather

Should the need ever arise, we have put into place a cancelation policy at JMPC. If ever in doubt that church or church activities are canceled you can check the following places:

- Church Voicemail will advise of cancelations
- We will post on Facebook
- We will post on our Website ([www.johnmcmillanpc.org](http://www.johnmcmillanpc.org))
- You will receive an e-mail advising of the cancelation

## Kids Club & Youth Group

If you are in the Third to Sixth grades we want to welcome you back to Kids Klub from **5:00 to 7:00 p.m.** on **Wednesdays**. Bring \$3 and join us for supper, arts/crafts, games, music and more!

Contact person: Linda Pelan at [linpel@verizon.net](mailto:linpel@verizon.net) or 412-527-9755

Youth Group (grades 7-12) also meets on Wednesdays.

## Director of Youth & Family Ministries Search

The search for a new Director of Youth and Families continues. Any referrals welcome; please contact Kathleen Mazzola at [kmmazz2014@gmail.com](mailto:kmmazz2014@gmail.com).





## John McMillan Preschool News

We are so thankful that it is spring - our preschoolers are bursting with energy and are so glad to go outside on our wonderful playground! Our preschool days have been full of joy and activity.

**Sarris Easter Candy Sale: Candy Sales will run until March. 16<sup>th</sup>. Thank you** to everyone who purchased Sarris candy for Easter. Your support is very much appreciated. Candy will be delivered on the 26<sup>th</sup>. Enjoy your delicious chocolate!

**Pet Week:** We had lots of fun with all of the pets that visited and we read lots of books during our *Paws for Reading* program. Check out all the bones in the hallway!

**We are offering five new afternoon enrichment classes for spring: Buggin' Out, We Dig Dinosaurs, Kids In the Kitchen, Road Tripping and Raindrops and Rainbows.**

Our **Easter** parties are being planned. We will have an egg hunt, search for our Easter baskets that the Easter Bunny will hide, and play some fun games.

Ms. Verna and Mr. Bernie provided us with a great lesson on dinosaurs. We were able to see ger dinosaur collection and fossils. They always bring us such a wonderful program.

Ms. Miranda visited from the Bethel Park Library. She does a great job engaging the children and we look forward to working with her.



The children have been enjoying our new **Music** classes with Playnotes. The children sing along to the guitar and play different musical instruments. We are thrilled with the program and so thankful to have them come to our school.

On March 20th, we will be celebrating our school with an Open House. All are welcome to join us in our open house. We will have baskets to raffle and refreshments to enjoy.

On April 29th we will be attending our spring fieldtrip to the Spring House Farm in Eighty-Four, PA. The children will learn how milk is collected and pasteurized. They will also be able to milk a cow and feed a baby calf. They will enjoy an ice cream cone at the end of the tour.

Families are invited to our **Graduation Celebration, May14th from 7:00-8:30 pm.**

The preschoolers will be performing songs and fingerplays. They will then "Graduate" from their preschool class. we will end our evening with ice cream.

